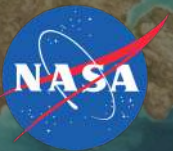


Convention on
Biological Diversity



INTRODUCTION TO UN BIODIVERSITY LAB

Anne Virnig, UNDP



WCMC



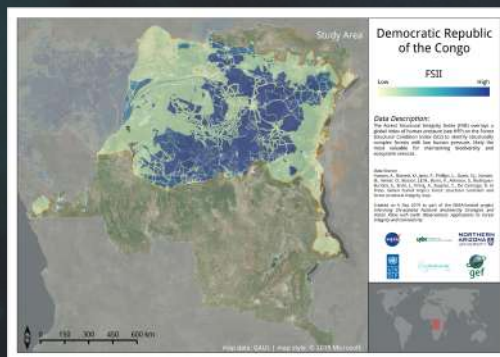
WHAT IS UN BIODIVERSITY LAB?

- FREE, open-source platform (www.unbiodiversitylab.org)
- Provides stakeholders with access to **high-quality global spatial data layers & analytic tools**
- Does **NOT** require GIS expertise
- Created as part of **UNDP & UNEP's joint work** to support Parties in their commitments to the Convention on Biological Diversity

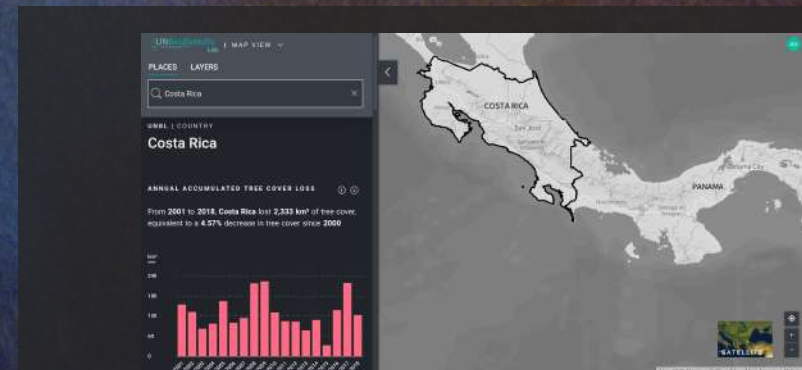
UN BIODIVERSITY LAB | FIVE KEY FEATURES



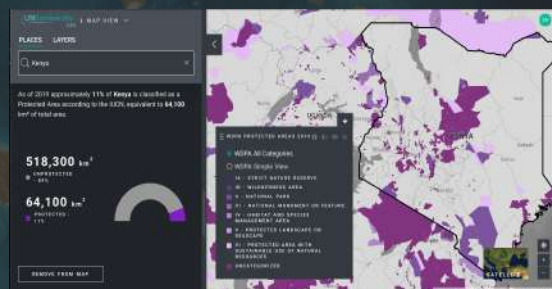
1. Access >100 global spatial data layers



2. Priority access to NASA project data



3. Create private workspaces



4. View customizable widgets & dashboards



5. Conduct analyses & create maps



WHO USES UN BIODIVERSITY LAB?

1. 313 policymakers from 61 countries
2. Official decision support system for NASA Forest Integrity & Life on Land Projects
3. >53,000 views of the public site
4. How can we support *your* needs?



POLL | WHAT FEATURES ARE MOST RELEVANT FOR YOU?

1. Access global data layers
2. Upload my data to a secure private workspace
3. Use dashboards to summarize key metrics
4. Run basic analyses
5. Create maps



UN BIODIVERSITY LAB | WHAT SETS US APART?

1. *Political mandate* & relevancy
2. *UNDP & UN Environment* provide key government engagement
3. *Equator Initiative* provides engagement of indigenous peoples & local comm
4. *Private workspaces* for contextual conservation action



WHAT NEXT? | UN BIODIVERSITY LAB 2.0

Select country/region



UNBiodiversityLab - World

English

Filter views ...

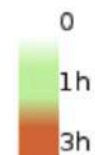
Filter activated views Advanced filter(139 / 139)



Aboveground live woody carbon density change 2003-2014 (Baccini et al. 2017)



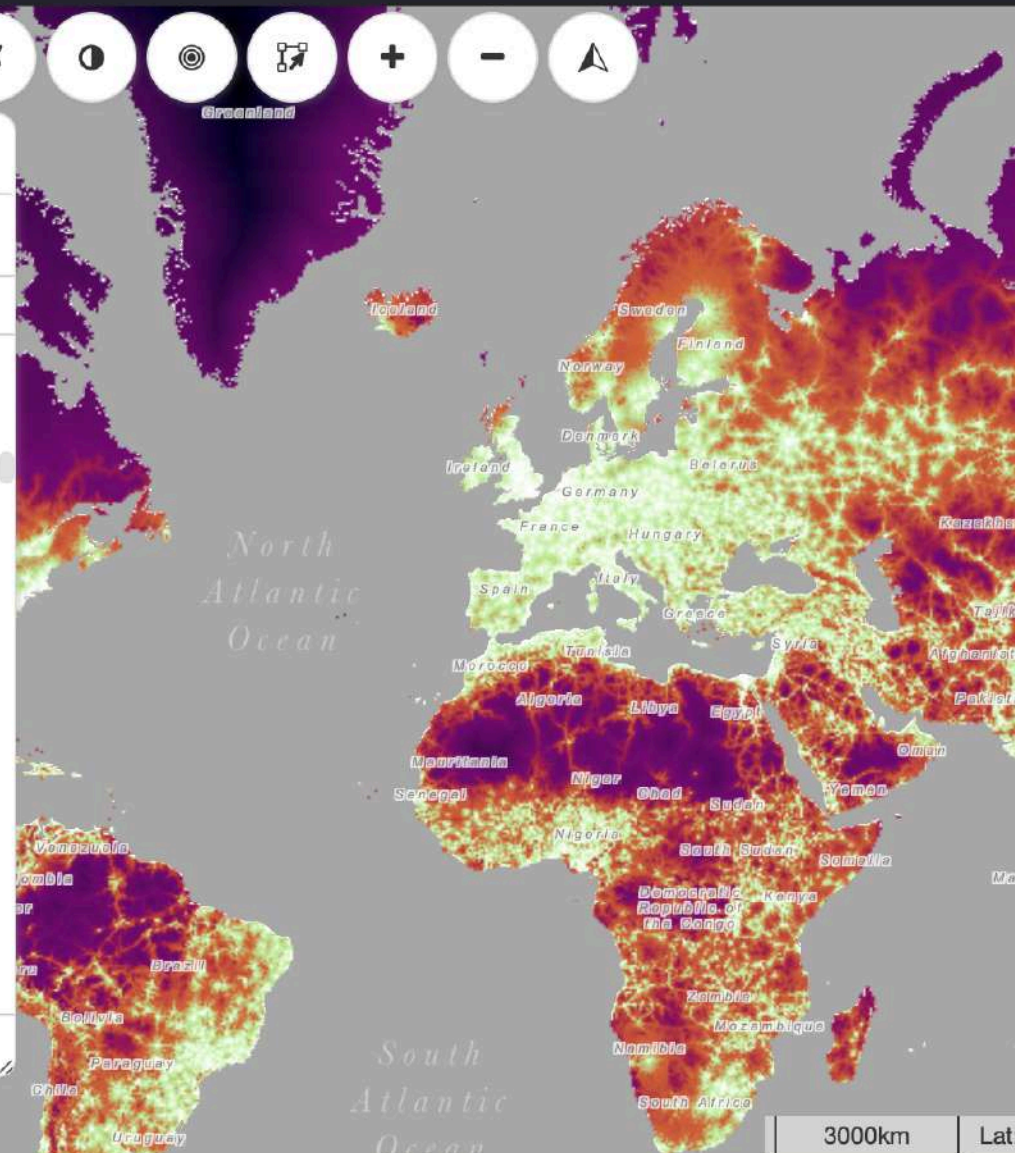
Accessibility To Cities (2015)



This global accessibility map enumerates land-based travel time to the nearest densely-populated area for all areas be-
majority of built-up land cover types coincident with a population centre of at least 50,000 inhabitants. This map was pro-



South Pacific



Explore [18 biodiversity status maps](#) created for your country.

Apply Aichi Biodiversity Targets:

Aichi Biodiversity Target 5



Aichi Biodiversity Target 11



Aichi Biodiversity Target 12



Aichi Biodiversity Target 14



Aichi Biodiversity Target 15



Apply Projects:

Forest Integrity Project



PLACES LAYERS

search layers

FILTERS

Protected Areas

Seagrass

Protected Areas

Species Richness 2013

Biodiversity

Terrestrial Biomes

Ecosystem Services

Terrestrial Mammal Richness 2013

Biodiversity

Threatened Species Richness 2013

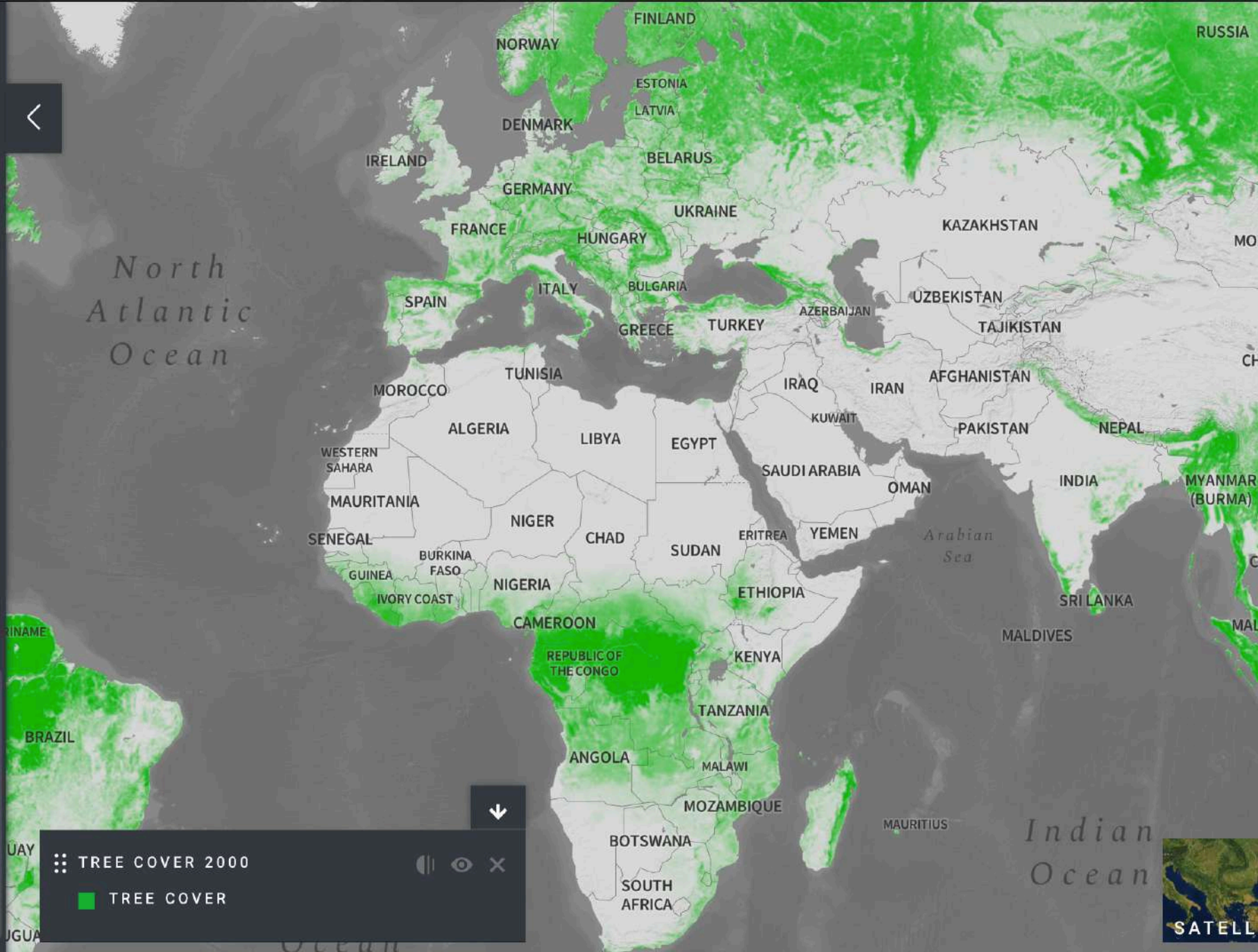
Human Impact

Tree Cover 2000

Land Cover

Tree Loss

Human Impact



TREE COVER 2000

TREE COVER

Mapbox navigation controls: a square with four dots, a vertical bar, an eye icon, and an 'X' icon.

CHALLENGES FACED

1. **Need for** seamless communication with other platforms
2. **Need to** conduct analyses & downloads for all data types
3. **Need to** summarize key metrics for decisionmakers
4. **Need for** user-friendly design and functionality
5. **Need for** multilingual functionality

HOW ADDRESSED

1. **API** to pull/push data
2. **Raster analytics** and downloads
3. **Widget & dashboards**
4. **Re-envisioned design & functionality**
5. **Google translate interface**

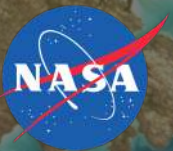


Convention on
Biological Diversity



THANK YOU!

www.unbiodiversitylab.org



WCMC